

**Swarnjayanti Gram Swarozgar Yojana (SGSY)/
National Rural Livelihood Mission (NRLM)**

I. Objective / purpose

Vision /Mission Statement

“To reduce poverty by enabling the poor households to access gainful self-employment and skilled wage employment opportunities resulting in appreciable improvement in their livelihoods on a sustainable basis, through building strong and sustainable grassroots institutions of the poor.”

Brief history

Pursuant to the recommendations of Hashim Committee, this Ministry restructured all the Rural Development and Poverty Alleviation programmes such as IRDP, TRYSEM, DWCRA, SITRA, GKY, MWS with a view to improving the efficacy of programmes. All these Schemes were merged into a single self employment programme known as Swarnjayanti Gram Swarozgar Yojana (SGSY). It was approved by the CCEA in its meeting held on 16th March, 1999 and was launched on 1st April, 1999. The SGSY has a definite objective of improving the family incomes of the rural poor and, at the same time, providing for a flexibility of design at the grassroots level to suit the local needs and resources. The objective of the restructuring is to provide a sustainable income generation through micro-enterprise development, both land-based and otherwise. In doing so, effective linkages have been established between the various components such as capacity building of the poor, credit, technology, marketing and infrastructure.

Duties

Laying of policy guidelines
Release of funds to the States
Monitoring and evaluation of performance

Main activities / functions

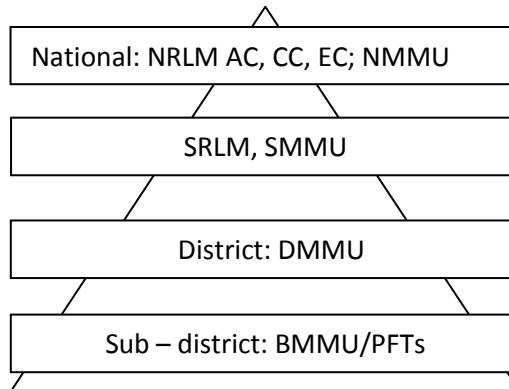
Formulation of policy guidelines, release of funds under SGSY/NRLM and its monitoring and evaluation.

List of services being provided

- Formulation of guidelines for implementation of NRLM.
- Providing technical assistance to States for preparation of
 - ❖ State implementation structure
 - ❖ State Poverty Reduction Plan
 - ❖ Perspective Annual Action Plan
- Examination and approval of State Project Implementation Plan (SPIP)
- Release of funds for setting up Rural Self Employment Training Institutes (RSETIs)
- Conducting Central Level Coordination Committee (CLCC) meeting for apex level consultations
- Monitoring / Evaluations

- Grievance redressal mechanism

Organizational Structure Diagram at various levels namely State, directorate, region, district, block etc.



AC: Advisory Committee
 CC: Coordination Committee
 EC: Empowered Committee
 NMMU: National Mission Management Unit
 SRLM: State Rural Livelihood Mission
 SMMU: State Mission Management Unit
 DMMU: District Mission Management Unit
 BMMU: Block Mission Management Unit
 PFT: Project Facilitation Team

Expectation from public for enhancing its effectiveness and efficiency

To access the disclosures made in the public domain and to bring to notice any deviation from stated policy

Arrangements and methods made for seeking public participation / contribution

Stakeholders are consulted on policy matters through workshops, conferences and written correspondence etc. Any new policy initiative is also put on the website of the Ministry and suggestions are invited

Mechanism available for monitoring the services delivery and public grievance resolution

IT based Monitoring and evaluation mechanism
 Right to Information Act, 2005

II. Please provide details of the powers and duties of officers and employees of the organization

- Laying of policy guidelines
- Release of funds to the States

- Monitoring and evaluation of performance

III. Please provide list of rules, regulations, instructions, manual and records, held by public authority or under its control or used by its employees for discharging functions as per the following format. This format has to be filled for each type of document

Files, audit reports, expenditure control registers, guidelines, program implementation plans

	Name /Title of document	Framework for Implementation of NRLM
	Type of document Choose one of the types given below (Rules, Regulations, Instructions, manual, Records, others)	Others
Brief write-up on the document		Based on Ministry of Rural Development's extensive consultations with various stakeholders including the State Governments, Civil Society Organizations, Bankers and academicians, NRLM Framework for Implementation has been developed. NRLM is a learning mission and learns from all the best practices of poverty eradication and failures in the country. Like NRLM, its Framework for Implementation is a learning, live and dynamic framework. This NRLM framework offers space for local plans based on local context and offers space for learning from the experiences in the field as the implementation progresses.

From where one can get a copy of rules, regulations, instructions, manual and records

Ministry of Rural Development, Krishi Bhawan, New Delhi. However these are also available on the website of the ministry www.rural.nic.in

Fee charged by the department for a copy of rules, regulations, instructions, manual and records (if any)

N.A.

Name / Title of document	NRLM Mission Document
Type of document Choose one of the types given below (Rules, Regulations, Instructions, manual, Records, others)	Others
Brief write-up on the document	The NRLM Mission Document discusses the Mission, Principles, values and key features of NRLM.
From where one can get a copy of rules, regulations, instructions, manual and records	Available on the website
Fee charged by the department for a copy of rules, regulations, instructions, manual and records (if any)	Not applicable.

- IV. Whether there is any provision to seek consultation / participation of public or its representatives for formulation of policies? If there is, please provide details of such policy in following format

S. No.	Subject / Topic	Is it mandatory to ensure public participation (yes/no)	Arrangements for seeking public participation
1	Policy matters relating to SGSY / NRLM	No	SGSY/NRLM policy matters are considered in consultation with the stakeholders i.e. the States / UTs, Banks, NGOs etc through workshops, conferences and written correspondence.

- V. Use the format given below to give the information about the official documents. Also mention the place where the documents are available e.g. at secretariat level, directorate level, others (Please mention the level in place of writing "Others")

S. No.	Category of the document	Name of the document	Procedure to obtain the document	Held under custody of
1	Guideline	Framework for implementation and Mission document	Available on the website	Ministry of Rural Development

- VI. Please provide information on Boards, Councils, Committees and other Bodies related to the public authority in the following format.

Name and address of the Affiliated Body	
Type of Affiliated Body (Board, Council, Committees, Other Bodies)	Advisory Committee on NRLM Coordination Committee on NRLM

	Executive Committee on NRLM
Brief introduction of the Affiliated Body (Establishment Year, Objective/Main Activities)	Advisory Committee, established in 2011, a policy making committee at national level consisting of eminent persons representing CSOs, industry association, academicians, development experts etc. Coordination committee, established in 2011, under the chairmanship of Secretary (RD) to oversee activities of Mission Empowered Committee, established in 2011, under the chairmanship of Secretary (RD), to carry out the activities of NRLM
Role of Affiliated Body (Advisory/Managing/ Executive/Others)	Advisory, Managing and executive as above
Structure and Member Composition	As attached
Head of the Body	Secretary (RD)
Address and main office and its Branches	Ministry of Rural Development Krishi Bhawan New Delhi-110001
Frequency of Meetings	As required
Can public participate in the meetings?	No
Are minutes of the meetings prepared?	Yes
Not Applicable.	

VII. Please provide contact information about the Public Information Officers, Assistant Public Information Officers and Departmental Appellate Authority of the Public Authority.

See list of Central Public Information Officers (CPIOs) and Appellate Authorities (AAs)

VIII. What is the procedure followed to take a decision for various matters

Decisions are taken on file by competent authority as per delegated authority

IX. What are the documented procedures/laid down procedures/Defined criteria/Rules to arrive at a particular decision matters? What are different levels through which a decision process moves?

Framework for implementation of NRLM.

Section Officer - Under Secretary – Dy. Secretary - Jt. Secretary - Secretary

X. What are the arrangements to communicate the decision to the public?

Website of this Ministry (www.rural.nic.in)

XI. Who are the offices at various levels whose opinions are sought for the process of decision making?

State Rural Development Departments, District Rural Development Agencies (DRDAs), Banks

XII. Who is the final authority that vets the decision?

Minister for Rural Development

XIII. Please provide information separately in the following format for the important matters on which the decision is taken by the public authority.

S. No.		
1	Subject on which the decision is to be taken	Not applicable.
	Guidelines / Directions, if any	
	Process of Execution	

XIV. Directory of officers and Employees

Given under chapter heading "Directory of Officers"

XV. Please provide information about the details of the budget for different activities under different schemes in the given format:

Budget for the year 2010-2011, under different activities, **attached**

XVI. The manner of Execution of Subsidy Programmes. Please provide the information as per the following format

The SGSY is being restructured as National Rural Livelihood Mission.

S. No.	Items	Remarks
1	Name of the Programme/Scheme	National Rural Livelihood Mission
2	Duration of the Programme/Scheme	On going
3	Objective of the Programme	To reduce poverty by enabling the poor households to access gainful self-employment and skilled wage employment opportunities resulting in appreciable improvement in their livelihoods on a sustainable basis, through building strong and sustainable grassroots institutions of the poor."
4	Physical and financial targets of the	Under Swarnjayanti Gram Swarojgar

	programme (for the last year)	Yojana (SGSY) – Budget Allocation - 2984 Target for total number of swarojgaries assisted – 21.7 lakh (State wise statement attached at Annexure-I)
5	Eligibility of beneficiary	BPL family
6	Pre – requisites for the benefit	N.A
7	Procedure to avail the benefits of the programme	As per norms and procedures fo the Program.
8	Criteria for deciding eligibility	As per guidelines
9	Detail of the benefits given in the programme (also mention the amount of subsidy or other help given)	As per guidelines
10	Procedure for the distribution of the subsidy	As per guidelines.
11	Where to apply or whom to contact in the office for applying	Gram Panchayat
12	Application fee (where applicable)	Not Applicable
13	Application format (where applicable. If the application is made on plain paper please mention it along with what the applicant should mention in the application)	Not Applicable
14	List of attachments (certificates/documents)	Not Applicable
15	Format of attachements	Not Applicable
16	Where to contact in case of process related complaints	District Rural Development Agency (DRDA)
17	Details of available fund (At various levels like District level, Block level etc.)	Annexure-II

XVII. Particulars of Recipients of concessions, permits or authorization granted by it. Please provide the information as per the following format.

Not Applicable

S. No.	Items	Remarks
1	Name of the programme	Not Applicable
2	Type (Concession/Permits/Authorization)	-do-
3	Objective	-do-
4	Targets set (for the last year)	-do-
5	Eligibility	-do-
6	Criteria for the eligibility	-do-
7	Pre – requisites	-do-
8	Procedure to avail the benefits	-do-

9	Time limit for the Concession/Permits / Authorization	-do-
10	Application Fee (Where applicable)	-do-
11	Application format (where applicable)	-do-
12	List of attachments (certificates/documents)	-do-
13	Format of attachments	-do-

XVIII. Please provide the details of the Norms/Standards set by the Department for execution of various activities / programmes.

S. No.	Item of work	Prescribed norms
1	Norms/standards are being worked out for National Rural Livelihood Mission (NRLM).	

XIX. Please provide the details of the information related to the various schemes which are available in the electronic format

The 'Framework for Implementation' of NRLM and the 'Mission Document' for NRLM is available on the website along with Monthly Progress Reports (MPRs)

XX. Means, methods or facilitation available to the public which are adopted by the department for dissemination of information.

Awareness generation through intensive IEC activities using electronic media, print, press advertisements, workshops, outdoor through DAVP and interpersonal communication through DFP and S&DD have been taken up.

XXI. Frequently Asked Questions and their answers

Question.1. What is the aim of the Swarnjayanti Gram Swarajgar Yojana (SGSY)?

Answer The objective of the Swarnjayanti Gram Swarajgar Yojana (SGSY) is to bring the assisted poor families (Swarozgaries) above the poverty line by ensuring appreciable sustained level of income over a period of time. This objective is to be achieved through inter-alia organizing the rural poor into Self-Help Groups (SHGs) through the process of social mobilization, their training and capacity building and provision of income generating assets. This process is expected to ultimately lead to the strengthening and socio-economic empowerment of the rural poor as well as improve their collective bargaining power.

Question.2. How do I form Self-Help Group or participate in one such group?

Answer Under the SGSY, the individual beneficiaries and members of SHGs are called Swarozgaries.

- ❖ Generally, a Self-Help Group (SHG) consists of 10 to 20 members. However, in difficult areas like deserts, hills, areas with scattered and sparse populations and in case of minor irrigation and disabled persons, this number may be from 5 – 20 persons.
- ❖ List of Below Poverty Line (BPL) households identified through BPL census, and duly approved by Gram Sabha forms the basis for identification of families from which the members of Self Help Groups (SHGs) are drawn.
- ❖ District Rural Development Agencies (DRDAs) initiate and sustain the process of social mobilization for formation, development and strengthening of SHGs through facilitators viz. NGOs, CBOs, Banks, Community Coordinators, Animators and Self – Help Group Promoting Institutions (SHPIs).

Question.3. Are there any rules as to who can be members of a Self – Help Groups?

Answer Generally all members of the groups should belong to BPL families. However, if necessary, a maximum of 20% and in exceptional cases, where essentially required, upto a maximum of 30% of the members of group may be taken from marginally above the poverty line living contiguously with BPL families and it they are acceptable to the BPL members of the group.

Question.4. Can I be a member of more than one Self – Help Group?

Answer No. However, a member of a SHG under SGSY can become a member of another community based organisation like producers' groups/cooperatives etc.

Question.5. What are the provisions for weaker sections, minorities and persons with disabilities under the SGSY?

Answer There is earmarking of 50% for SC/STs, 40% for women, 3% for disabled and 15% for minorities under the scheme.

Question.6. How do I identify an activity which can generate income for the group?

Answer The Block level SGSY committee, based on consultation process, may identify about 8-10 activities in the order of preference, based on the availability of resources, skills and backward and forward linkages in the block. This list should then be placed before the general body of the Panchayat Samiti (Block Panchayat) for recommendations. The list of selected key activities along with the recommendations of the Panchayat Samiti should then be forwarded by the BDO to the District SGSY Committee for consideration. The District SGSY Committee should scrutinize the proposals for each key activity separately in consultation with the concerned experts including the line department officials.

For each key activity there should be a project report indicating various elements such as training, credit, technology, infrastructure and marketing.

Question.7. What are the items for which financial assistance is provided to Swarozgaries under SGSY?

Answer Financial assistance is provided for Training, for capacity building of Swarozgaries, establishment of infrastructure, Revolving Fund to SHGs and Subsidy for economic activities.

Question.8. What are the criteria for release of Revolving Fund to SHGs formed under SGSY?

Answer There is a system of grading of SHGs into Grade-I and Grade-II assessing the achievements of SHGs, towards maturity level, as per the norms stipulated under SGSY Guideline.

SHGs that are in existence for about six months and become Grade-I as per the stipulated norms under SGSY Guidelines, are eligible for getting Revolving Fund from DRDA.

Question.9. When do the SHGs become eligible for getting Bank Loan and Subsidy?

Answer SHGs that are in existence for about six months as Grade-I and have demonstrated the potential of viable groups become Grade-II as per the stipulated norms under SGSY Guidelines. Such groups are eligible to receive the assistance for Economic Activity in the form of bank loan and subsidy.

Question.10. Who will give us loans?

Answer Loans are given by the financial institutions comprising commercial banks, cooperative banks and regional rural banks. The loan amount would be equal to the total project cost including the amount of subsidy admissible to the swarozgaries. Interest rates for SGSY loans will be as notified by RBI/NABARD from time to time.

Question.11. How much credit will I get?

Answer The size of loan for project depends on the nature of the project. SGSY has no investment ceiling other than the unit cost (i.e. investment requirement) worked out for the project.

Question.12. How much of subsidy will I get?

Answer For individual swarozgaries subsidy under SGSY will be uniform at 30% of the project cost, subject to a maximum of ₹ 7500/-. In respect of SC/STs and disabled, however, these will be 50% and ₹ 10,000/- respectively. For groups of Swarozgaries (SHGs), the subsidy would be at 50% of the project cost subject to per capita subsidy of ₹ 10,000/- or ₹ 1.25 lakhs, whichever is less. There will be no monetary limit on subsidy for irrigation projects.

Question.13. Will my Self – Help Group get any training?

Answer Yes. SGSY lays emphasis on skill development through well designed training courses. The design, duration of training and the training curriculum, which includes exposure visits of SHG members, is tailored to meet the needs of the identified activities. 10% of the central allocation has been earmarked for training of SHG members and Training of Trainers (ToT) functionaries.

In order to ensure institutional arrangement for skill development for self employment and wage employment, dedicated training institute for rural BPL youth i.e **Rural Self Employment Training Institutes (RSETIs)** are being set up in all the districts of the country.

Question.14. What is SARAS?

Answer SARAS is a brand name given by the Ministry to the exhibitions organized in New Delhi and major cities of the country for marketing of the rural products made by rural BPL Swarozgaries under SGSY.

Question.15. How much amount is provided for infrastructure development?

Answer For success of micro enterprise proper infrastructure is essential which may be required for production, quality testing, storage, design development, value addition, diversification of products or marketing for which provision of 20% (25% in case of NE States) of SGSY allocation of funds for each district has been made under the Scheme. This amount is to be used only as a last resort and to meet only critical gaps in infrastructure not provided for by the line departments but essential for proper implementation of SGSY.

Question.16. What are Special Projects under SGSY?

Answer 15% of funds under SGSY are set apart for Special Projects. The objective of Special Projects is to ensure a time-bound programme for bringing a specific number of Below Poverty Line (BPL) families above the poverty line through self employment generation by taking up of special projects. These projects are expected to be holistic and take care of all aspects of self-employment including social mobilization, organization, capacity building, training, provision of infrastructure, technology, production processes, marketing etc. with a combination of all or any of these strategies, for creating sustainable self employment opportunities for the beneficiaries and can be replicated under normal SGSY or by people themselves through their own initiatives. At present, only placement linked Special Projects are being taken up under SGSY.

Question.17. What are the roles of NGOs in the implementation of SGSY?

Answer NGOs play the role of facilitators in the formation of SHGs and help in training and capacity building of facilitators used by DRDAs as well as SHGs.

Question.18. What are the new initiatives under SGSY?

Answer SGSY is being restructured as National Rural Livelihoods Mission (NRLM) to implement it in a mission mode for targeted and time bound delivery of results. Under NRLM, interest subsidy is being introduced in addition to the enhancement of the economic assistance package for the beneficiaries. **Universal social mobilisation through formation of SHGs** under NRLM will ensure at least one member of each rural BPL family, preferably a woman member, is covered under SHG net. With a view to form strong Peoples Institutions, NRLM

will focus on setting up of federations of SHGs from village panchayat to district levels. NRLM propose to ensure **Universal financial inclusion** by facilitating opening of savings accounts of all its beneficiaries simultaneously, encouraging thrift and credit activities, facilitating access to credit from banks etc. Two major strategic shifts under NRLM, vis-à-vis SGSY is that (i) NRLM will demand driven programme and the states will formulate their own poverty reduction action plans under it and (ii) NRLM will provide for a professional support structure for programme implementation.

XXII. Related to seeking information with relation to training imparted to public by Public Authority

S.No.	Items	Remarks
1	Name of training programme with brief description	Not Applicable.
2	Time period for training programme/Scheme	
3	Objective of training	
4	Physical and Financial targets (Last year)	
5	Eligibility for training	
6	Pre – requisite for training (if any)	
7	Description of help (Mention the amount of Financial help, if any)	
8	Procedure of giving help	
9	Contact information for applying	
10	Application fee (where applicable)	
11	Other fees (where applicable)	
12	Application form (Incase the application is made on plain paper please mention the details which the applicant has to provide)	
13	List of enclosures / documents	
14	Format of enclosures / documents	
15	Procedure of application	
16	Process followed in the Public Authority after the receipt of application	
17	Normal time taken for issuance of certificate	
18	Validity period of certificate (If applicable)	
19	Process of renewal (if any)	
20	Selection procedure	
21	Time table of training programme (in case available)	
22	Process to inform the trainee about the training procedure	

23	Arrangement made by the public authority for creating public awareness about the training programme	
24	List of beneficiary of the training programme at various levels like district level, block level etc.	

Physical and Financial Progress during 2010-11 (upto December, 2010)

S.No.	STATES /U.T.	Central Funds (₹ in lacs)		Total No. of Swarozgaris Assisted	
		Central Allocation	Central Releases	Target	Achievement
1	2	3	4	5	6
1	Andhra Pradesh	12557.00	12338.51	116974	66830
2	Arunachal Pr.	692.00	371.00	5375	466
3	Assam	17988.00	14259.70	139636	94451
4	Bihar	29872.00	9882.90	278264	105927
5	Chhattisgarh	6635.00	5595.77	61814	32853
6	Goa	200.00	70.60	1881	337
7	Gujarat	4727.00	4327.02	44034	33909
8	Haryana	2781.00	2800.37	25902	14808
9	Himachal Pr.	1171.00	908.29	10903	7365
10	J & K	1449.00	643.05	13497	1738
11	Jharkhand	11264.00	5811.40	104932	91926
12	Karnataka	9482.00	6690.35	88327	58843
13	Kerala	4255.00	3780.61	39633	26334
14	Madhya Pr.	14214.00	12544.23	132407	65032
15	Maharashtra	18744.00	15444.94	174609	89949

16	Manipur	1206.00	575.52	9365	773
17	Meghalaya	1351.00	455.38	10491	6188
18	Mizoram	313.00	313.00	2429	2792
19	Nagaland	927.00	526.89	7194	3537
20	Orissa	14363.00	10127.65	133803	66820
21	Punjab	1351.00	1193.76	12581	9418
22	Rajasthan	7200.00	4926.26	67072	37488
23	Sikkim	346.00	173.00	2688	1064
24	Tamil Nadu	11103.00	10963.32	103430	89561
25	Tripura	2177.00	2267.00	16900	27861
26	Uttar Pradesh	43006.00	30374.50	400612	280465
27	Uttaranchal	2264.00	1824.57	21090	12796
28	West Bengal	15962.00	15265.42	148696	50395
29	A & N Island	25.00	35.84	176	157
30	Daman & Diu	25.00	0.00	176	0
31	D & N Haveli	25.00	0.00	176	0
32	Lakshadweep	25.00	25.00	176	0
33	Pondicherry	300.00	200.00	2100	1138
	Total	238000.00	174715.85	2177343	1281221

Annexure-II**Total Available Funds under Swarnjayanti Gram Swarozgar Yojana (SGSY)****during 2009-10**

SNO	DISTRICT	TOTAL FUNDS AVAILABLE (₹ in lacs)
1	2	3
	Andhra Pradesh -	
1	Adilabad	625.80
2	Anantapur	990.09
3	Chittoor	652.10
4	Cuddapah	1079.25
5	East Godavari	1009.75
6	Gantur	1441.08
7	Karimnagar	818.24
8	Khamman	924.82
9	Krishna	805.82
10	Kurnool	986.60
11	Mehboobnagar	920.60
12	Medak	521.53

13	Nalgonda	470.09
14	Nellore	662.56
15	Nizamabad	479.93
16	Prakasam	916.21
17	Rangareddy	500.08
18	Srikakulam	734.36
19	Vishakhapatnam	724.43
20	Viziyanagaram	607.81
21	Warangal	740.66
22	West Godavari	796.49
	Total	17408.30
	Arunachal Pradesh-	
1	Changlang	21.87
2	Dibang Valley	16.36
3	East Kameng	25.88
4	East Siang	9.53
5	Kurung Kumey	0.00
6	Lohit	101.14
7	Lower Dibang Valley	0.46

8	Lower Subsansiri	171.55
9	Papum Pera	18.46
10	Tawang	54.33
11	Tirap	85.59
12	Upper Siang	17.19
13	Upper Subansiri	70.43
14	West Kameng	42.45
15	West Siang	62.90
	Total	698.14
	Assam -	
1	Baksa	1026.78
2	Barpeta	1222.57
3	Bongaigaon	1230.97
4	Cachar	1626.51
5	Dhemji	540.24
6	Dhubri	2225.50
7	Dibrugarh	809.85
8	Goalpara	822.16
9	Golaghat	725.96

10	Hailakandi	561.13
11	Jorhat	854.87
12	Kamrup	1104.86
13	Kamrup (Metro)	116.35
14	Karbi Anglong	549.08
15	Karimganj	1299.60
16	Kokrajhar	728.98
17	Lakhimpur	873.33
18	Mangaldoi (Darrang)	674.08
19	Morigaon	946.07
20	N.C.Hills	120.41
21	Nagaon	2671.20
22	Nalbari	703.78
23	Sibsagar	1064.61
24	Sirang	570.97
25	Sonitpur	1773.66
26	Tinsukia	1106.75
27	Udalguri	735.28
	Total	26685.55

	Bihar -	
1	Araria	1521.13
2	Arwal	115.29
3	Aurangabad	839.16
4	Banka	793.79
5	Begusarai	1560.30
6	Bhabhua(Kaimur)	720.54
7	Bhagalpur	1557.39
8	Bhojpur	1912.24
9	Buxar	466.68
10	Chapra (Saran)	1736.60
11	Darbhanga	2275.58
12	East Champaran	1836.69
13	Gaya	1600.15
14	Gopalganj	781.64
15	Jahanabad	767.74
16	Jamui	557.49
17	Katihar	1483.37
18	Khagaria	1025.66

19	Kishanganj	1084.96
20	Lukhisarai	663.55
21	Madhepura	740.60
22	Madhubani	4381.65
23	Munger	654.99
24	Muzaffarpur	3286.43
25	Nalanda	1160.17
26	Nawadah	1125.11
27	Patna	960.83
28	Purnea	1851.05
29	Rohtas	584.76
30	Saharsa	890.91
31	Samastipur	3072.22
32	Shaikhpura	408.85
33	Sheohar	432.69
34	Sitamarhi	1790.50
35	Siwan	990.54
36	Supaul	2135.32
37	Vaishali	1337.17

38	West Champaran	1494.45
	Total	50598.17
	Chhattisgarh -	
1	Baster	746.74
2	Bilaspur	887.95
3	Dantewada	476.23
4	Dhamtari	250.85
5	Durg	565.13
6	Janjgir-Champa	598.17
7	Jashpur	317.46
8	Kanker	263.87
9	Kawardha	282.90
10	Korba	341.65
11	Koriya-Baikunthpur	209.44
12	Mahasamund	490.64
13	Raigarh	726.90
14	Raipur	1016.33
15	Rajnandgaon	508.37
16	Surguja	985.90

	Total	8668.54
	Goa -	
	North Goa	124.36
	South Goa	56.52
	Total	180.88
	Gujarat-	
1	Ahmedabad	248.23
2	Amreli	118.48
3	Anand	200.76
4	Bansakantha	497.78
5	Bharuch	324.20
6	Bhavnagar	246.32
7	Dahod	633.25
8	Dangs-Ahwa	94.74
9	Gandhinagar	46.54
10	Jamnagar	213.57
11	Junagarh	258.60
12	Kachchh	323.30
13	Kheda	269.92

14	Mehsana	136.54
15	Narmada	216.45
16	Navasari	202.60
17	Panchmahal	493.43
18	Patan	123.42
19	Porbandar	50.18
20	Rajkot	272.55
21	Sabarkantha	410.10
22	Surat	508.96
23	Surendernagar	210.40
24	Vadodara	390.64
25	Valsad	235.60
	Total	6726.56
	Haryana -	
1	Ambala	192.58
2	Bhiwani	283.04
3	Faridabad	56.45
4	Fatehabad	220.49
5	Gurgaon	103.12

6	Hissar	264.01
7	Jhajjar	119.84
8	Jind	268.43
9	Kaithal	224.52
10	Karnal	226.74
11	Kurushetra	196.20
12	Mohendergarh	163.10
13	Mewat	188.43
14	Palwal	138.57
15	Panchkula	59.71
16	Panipat	141.90
17	Rewari	185.16
18	Rohtak	114.45
19	Sirsa	199.04
20	Sonipat	206.20
21	Yamunanagar	181.96
	Total	3733.95
	Himachal Pradesh -	
1	Bilaspur	112.69

2	Chamba	275.64
3	Hamirpur	120.82
4	Kangra	384.22
5	Kinnur	18.01
6	Kullu	65.74
7	Lahaul & Spiti	22.23
8	Mandi	294.43
9	Shimla	232.05
10	Sirmour	81.07
11	Solan	136.94
12	Una	90.69
	Total	1834.53
	Jammu & Kashmir -	
1	Anantnag	241.38
2	Badgam	129.66
3	Baramulla	134.98
4	Doda	133.12
5	Jammu	112.24
6	Kargil	3.06

7	Kathua	69.17
8	Kupwara	60.15
9	Ladakh	16.62
10	Pulwama	72.68
11	Punch	51.67
12	Rajouri	139.46
13	Srinagar	30.58
14	Udhampur	113.24
	Total	1308.01
	Jharkhand -	
1	Bokaro	1298.20
2	Chatra	796.73
3	Deogarh	597.27
4	Dhandbad	801.21
5	Dumka	906.92
6	East Singhbhum	717.56
7	Garhwa	965.54
8	Giridh	1043.27
9	Godda	375.26

10	Gumla	786.85
11	Hazaribagh	571.14
12	Ramgarh	608.74
13	Jamtara	428.81
14	Kodarma	279.70
15	Latehar	492.78
16	Lohardaga	163.22
17	Pakur	444.24
18	Palamau	1223.40
19	Ranchi	569.82
20	Khuti	151.38
21	Sahebganj	1538.29
22	Saraikela	748.57
23	Simdega	351.11
24	West Singhbhum	651.62
	Total	16511.62
	Karnataka -	
1	Bagalkot	286.78
2	Bangalore (R)	198.93

3	Bangalore (U)	143.38
4	Belgaum	927.27
5	Bellary	1053.24
6	Bidar	514.27
7	Bijapur	579.21
8	Chamarajanagar	759.13
9	Chickmanglur	268.59
10	Chitradurga	505.48
11	Chikkaballapura	367.61
12	Dakishan Kanada	252.08
13	Davanagere	564.36
14	Dharwad	250.15
15	Gadag	422.87
16	Gulbarga	805.53
17	Hassan	383.65
18	Haveri	451.45
19	Kadagu (Coorg)	137.32
20	Kolar	361.27
21	Koppal	723.92

22	Mandya	451.96
23	Mysore	570.67
24	Raichur	602.07
25	Ramanagar	274.14
26	Shimoga	516.66
27	Tumkur	803.98
28	Udupi	258.85
29	Uttar Kannada	313.82
	Total	13748.65
	Kerala -	
1	Alleppey (Alappuzha)	510.18
2	Eranakulam	324.43
3	Idukki	105.90
4	Kannur (Cannanore)	422.43
5	Kasargod	211.42
6	Kollam	538.61
7	Kottayam	200.74
8	Kozhikode	364.80
9	Malaparam	597.49

10	Palghat (Polakkad)	645.42
11	Pathanamithitta	241.42
12	Thiruvanthaparam	592.76
13	Trichur (Thrissur)	516.87
14	Wayanad	219.07
	Total	5491.54
	Madhya Pradesh -	
1	Annuppur	252.10
2	Ashok Nagar	194.78
3	Balaghat	989.56
4	Barwani	437.16
5	Betul	487.41
6	Bhind	224.04
7	Bhopal	116.87
8	Burhanpur	161.54
9	Chhattarpur	390.64
10	Chhindwara	647.96
11	Damoh	401.42
12	Datia	58.61

13	Dewas	410.39
14	Dhar	494.72
15	Dindori	413.91
16	Guna	289.81
17	Gwalior	232.65
18	Harda	112.88
19	Hoshangabad	241.09
20	Indore	133.91
21	Jabalpur	747.31
22	Jhabua	568.79
23	Katni	624.25
24	Khandwa (East Nimar)	394.69
25	Khargaon	392.54
26	Mandala	687.81
27	Mandshore	324.97
28	Moraina	258.16
29	Narsinghpur	396.94
30	Neemuch	122.27
31	Panna	503.91

32	Raisen	396.86
33	Rajgarh	425.90
34	Ratlam	277.37
35	Rewa	840.50
36	Sagar	769.20
37	Satana	1119.09
38	Sehore	257.63
39	Seoni	511.37
40	Sheopur	121.62
41	Shajapur	385.10
42	Shahadol	305.78
43	Shivapuri	303.94
44	Sidhi	774.48
45	Tikamgarh	453.98
46	Ujjain	324.93
47	Umeria	179.81
48	Vidisha	346.91
	Total	19507.55
	Maharashtra -	

1	Ahmednagar	969.21
2	Akola	655.19
3	Amravati	1113.39
4	Aurangabad	501.13
5	Beed	634.69
6	Bhandara	663.82
7	Buldhana	961.51
8	Chandrapur	979.39
9	Dhule	818.21
10	Gadchiroli	579.10
11	Gondia	791.91
12	Hingoli	286.90
13	Jalgaon	1322.98
14	Jalna	413.37
15	Kolhapur	502.65
16	Latur	506.77
17	Nagpur	800.68
18	Nanded	667.49
19	Nandurbar	1087.36

20	Nasik	1465.12
21	Osmanabad	350.54
22	Prabhani	312.55
23	Pune	706.13
24	Raigad	595.02
25	Ratnagiri	762.96
26	Sangli	327.51
27	Satara	495.10
28	Sindhudurg	433.19
29	Solapur	816.46
30	Thane	1340.92
31	Wardha	474.65
32	Washim	552.93
33	Yavatmal	1055.61
	Total	23944.44
	Manipur -	
1	Bishnupur	37.94
2	Chandel	186.80
3	Churachanderpur	44.41

4	Imphal East	46.01
5	Imphal West	78.50
6	Senapati	186.36
7	Tamenglang	5.33
8	Thoubal	90.01
9	Ukhrul	13.28
	Total	688.64
	Meghalaya -	
1	East Garo Hills (Williamnagar)	49.81
2	East Khasi Hills (Shillong)	201.88
3	Jaintia Hills (Jowai)	180.06
4	Ri-Boi (Nongpoh)	137.38
5	South Garo Hills (Baghmara)	35.77
6	West Garo Hills (Tura)	311.88
7	West Khasi Hills (Nongstion)	301.73
	Total	1218.510
	Mizoram-	
1	Aizwal	87.51
2	Champhai (Aizwal-E)	68.24

3	Lunglei	69.78
4	Kolasib (Aizwel-N)	33.39
5	Mamit (Aizwal-W)	39.10
6	Lawngitia (Chhimbauipui West)	55.34
7	Saiha (Chhimbauipui East)	26.66
8	Serchhip (Aizwal-S)	33.40
	Total	413.42
	Nagaland-	
1	Dimapur	99.17
2	Kohima	77.76
3	Mokochung	47.08
4	Mon	90.15
5	Phek	30.20
6	Tuensang	78.48
7	Wokha	28.12
8	Zunheota	98.48
9	Kiphire	46.70
10	Longleng	40.89
11	Peren	50.00

	Total	687.03
	Orissa -	
1	Angul	456.66
2	Balasore	1226.12
3	Bargarh	578.25
4	Bhadrak	416.95
5	Bolangir	851.72
6	Boudh	315.90
7	Cuttak	759.42
8	Deogarh	169.78
9	Dhenkanal	637.65
10	Gajapati	265.56
11	Ganjam	1708.20
12	Jagatsinghpur	280.62
13	Jajpur	730.72
14	Jharsuguda	120.81
15	Kalahandi	801.83
16	Kendrapara	429.03
17	Keonjhar	1114.23

18	Khurda	520.18
19	Koraput	932.35
20	Malkangiri	431.66
21	Mayurbhenj	1624.05
22	Nabarangpur	872.60
23	Naupada	419.32
24	Nayagarh	458.26
25	Phulbani	469.58
26	Puri	656.45
27	Rayagada	653.45
28	Sambalppur	368.80
29	Sonepur	268.85
30	Sundergarh	946.49
	Total	19485.49
	<i>Punjab -</i>	
1	Amritsar	68.63
2	Barnala	128.09
3	Bhatinda	34.76
4	Faridkot	11.88

5	Fatehgarh Saheb	28.02
6	Ferozepur	310.51
7	Gurdaspur	198.60
8	Hoshiarpur	48.05
9	Jalandhar	90.68
10	Kapurthala	65.73
11	Ludhiana	15.01
12	Mansa	147.61
13	Moga	52.90
14	Mohali (S.A.S. Ngr)	11.42
15	Muktsar	23.65
16	Nawashahar	31.78
17	Patiala	59.86
18	Rupnagar (Ropar)	16.60
20	Tarn Taran	131.17
21	Sangrur	251.36
	Total	1726.31
	Rajasthan -	
1	Ajmer	289.21

2	Alwar	647.01
3	Banswara	936.07
4	Baran	208.99
5	Barmer	478.85
6	Bharatpur	199.41
7	Bhilwara	542.20
8	Bikaner	254.08
9	Bundi	261.48
10	Chittorgarh	1011.91
11	Churu	415.53
12	Dausa	292.90
13	Dholpur	156.71
14	Dungarpur	820.92
15	Hanumangarh	207.79
16	Jaipur	427.97
17	Jaisalmer	78.92
18	Jalore	303.54
19	Jhalawar	379.07
20	Jhunjunu	118.09

21	Jodhpur	161.00
22	Karoli	351.44
23	Kota	155.91
24	Nagaur	280.63
25	Pali	272.40
26	Pratapgarh	0.00
27	Rajasmand	292.98
28	Sawai Madhopur	352.77
29	Sikar	130.13
30	Sirohi	253.55
31	Sri Ganganagar	244.44
32	Tonk	361.86
33	Udaipur	1127.99
	Total	12015.75
	Sikkim -	177.99
	Total	177.99
	Tamilnadu -	
1	Atp Selvam (Thiruvarur)	417.67
2	Chengalpattu (Kanchipuram)	609.73

3	Ariyalur	244.34
4	Coimbatore	650.82
5	Dharmapuri	362.57
6	Dindigul Anna	479.07
7	KAMARAJAR/Virudnagar	432.82
8	Kanyakumari	311.01
9	Karur-Dheeran	283.24
9	Krishnagiri	413.17
10	Madurai	534.34
11	Mgr (New)/Thiruvallur	534.88
12	Nilgiris/Udagamandalam	109.06
13	North Arcot (Vellore)	1238.89
14	Perambalur	146.25
15	Periyar (Erode)	524.17
16	Pudukottai	375.65
17	QUIED-E-MILLETH/Nagapattanam	369.14
18	Rajaji/Namakkal	385.57
19	Ramanathapuram (Ramnad)	342.89
20	Salem	685.28

21	Sambhyavaraiyar (Tirunnamalai)	661.56
22	Sivaganga (Pasumpon)	332.66
23	South Norcot(Cuddalore/Vallalar)	607.22
24	Thanjavur	622.10
25	Tirunelveli	680.18
26	Trichy	440.92
27	V.O.Chidambanar (Tuticorn/Thoothukudi)	515.42
28	V.R.Padayochiar (Vallupuram)	1209.32
29	Vaigai-Veeran (Thenni)	271.59
	Total	14791.511
	Tripura -	
1	Dhalai Distt.	328.17
2	North Tripura	494.18
3	South Tripura	787.23
4	West Tripura	662.10
	Total	2271.68
	Uttar Pradesh -	
1	Agra	440.33
2	Aligarh	316.82

3	Allahabad	1965.67
4	Ambedkar Nagar	1506.16
5	Auraiya	854.73
6	Azamgarh	1468.74
7	Badaun	1124.79
8	Bagpat	82.75
9	Bahriach	1981.60
10	Balia	1420.50
11	Balrampur	613.92
12	Banda	1102.15
13	Barabanki	2631.52
14	Bareilly	1146.46
15	Basti	1354.47
16	Bijnaur	648.08
17	Bulandshahar	318.38
18	Chandauli	706.77
19	Deoria	880.79
20	Etah	588.85
21	Etawah	661.35

22	Faizabad	1030.78
23	Fetehpur	1075.57
24	Firozabad	234.08
25	Furrukhabad	664.25
26	Gautam Budh Nagar	153.72
27	Ghaziabad	147.65
28	Ghazipur	1541.65
29	Gonda	1313.35
30	Gorakhpur	1552.48
31	Hamirpur	469.49
32	Hardoi	3498.76
33	Jalaun (Orai)	620.73
34	Jaunpur	1870.00
35	Jhansi	671.76
36	Jyotiba Fule Nagar	348.20
37	Kannauj	430.58
38	Kanpur Dehat	1333.92
39	Kanpur Nagar	927.83
40	Kaushambi	1028.28

41	Kheri (Lakhimpur)	1999.13
42	Kushinagar (Padrauna)	2421.57
43	Lalitpur	326.14
44	Lucknow	861.72
45	MAHAMAYA NAGAR (Hathras)	259.12
46	Maharajganj	615.66
47	Mahoba	278.35
48	Mainpuri	761.57
49	Mathura	289.97
50	Maunath Bhanjan	743.15
51	Meerut	112.41
52	Mirzapur	1643.34
53	Moradabad	452.40
54	Muzaffarnagar	488.61
55	Pilibhit	874.58
56	Pratapgarh	2292.54
57	Rai Bareilly	2716.83
58	Rampur	429.10
59	Saharanpur	612.05

60	SAHJI MAHARAJ NAGAR (Chitrakut)	461.64
61	Sant Kabir Nagar	1236.75
62	Sant Ravidas Nagar (Bhadohi)	348.44
63	Shahjahanpur	1081.10
64	Sharavasti	703.01
65	Sidharthnagar	826.35
66	Sitapur	2166.97
67	Sonbhadra	1503.44
68	Sultanpur	1901.69
69	Unnao	3055.05
70	Varanasi	535.45
	Total	72726.00
	Uttarakhand -	
1	Almora	381.72
2	Bageshwar	134.74
3	Chamoli	256.04
4	Champawat	99.13
5	Dehradun	322.99
6	Haridwar	212.69

7	Nainital	173.03
8	Pauri Garhwal	277.65
9	Pithoragarh	218.08
10	Rudraprayag	133.34
11	Tehri Garhwal	462.22
12	Udham Singh Nagar	294.57
13	Uttar Kashi	343.46
	Total	3309.66
	West Bengal-	
1	24 Paraganas (North)	1785.05
2	24 Paraganas (South)	1381.00
3	Bankura	1030.24
4	Birbhum	1115.08
5	Burdwan	1530.65
6	Cooch Behar	1113.04
7	Darjeeling	190.25
8	Hooghly	1093.40
9	Howrah	764.10
10	Jalpaiguri	1015.14

11	Malda	1359.66
12	Midnapore (Paschim)	1996.99
13	Murshidabad	2043.50
13	Midnapore (Purba)	1071.65
14	Nadia	1402.67
15	North Dinajpur	654.68
16	Purulia	1332.29
17	Siliguri	191.01
18	South Dinajpur	692.10
	Total	21762.51
	Andaman&Nicobar-	
1	Andaman	5.72
3	Nicobar	0.00
2	North & Middle Nicobar	4.71
	Total	10.43
	Daman & Diu -	
1	Daman & Diu	0.00
	Total	0.00
	D & N Haveli	

1	D & N Haveli	12.50
	Total	12.50
	Lakshadweep- June'08	
1	Lakshadweep	37.75
	Total	37.75
	Pudducherry - Sep'08	
1	Pudducherry	263.50
	Total	263.50

